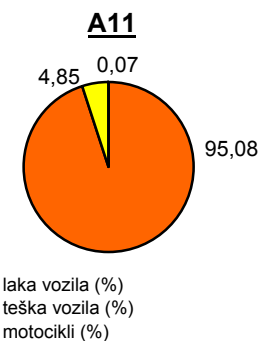
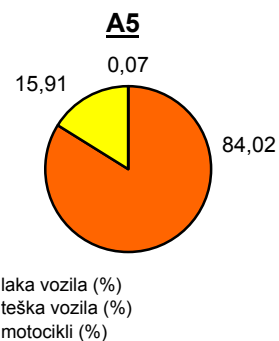
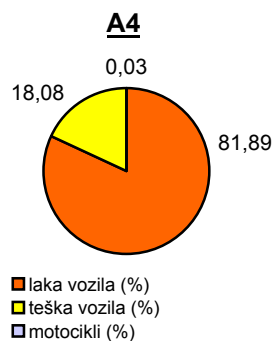
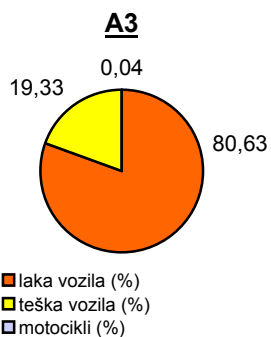
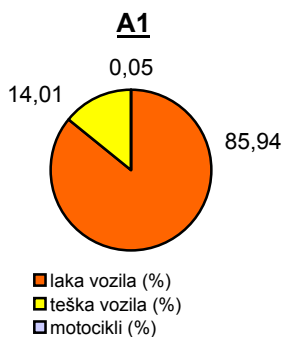


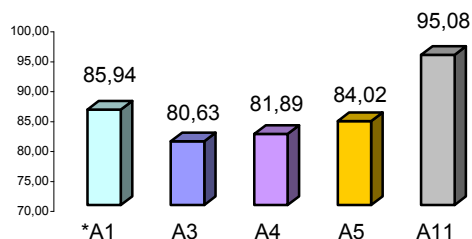
Promet na autocestama u nadležnosti HAC-a u mjesecu STUDENOM 2011. godine

Autocesta		OSTVARENI PROMET					Usporedba 2011./2010.		
oznaka	duljina u km	broj motocikala	broj lakih vozila	broj teških vozila	ukupno 2011.	ukupno 2010.	°PMDP 2010.	°PMDP 2011.	odnos prometa 2011./2010.
*A1	399,8	73	139.093	22.681	161.847	164.488	5.483	5.395	-1,61%
A3	306,4	203	368.298	88.282	456.783	464.944	15.498	15.226	-1,76%
A4	96,4	91	234.882	51.858	286.831	263.553	8.785	9.561	8,83%
A5	53,6	53	66.676	12.626	79.355	74.813	2.494	2.645	6,07%
A11	9,0	40	52.107	2.660	54.807	58.147	1.938	1.827	-5,74%

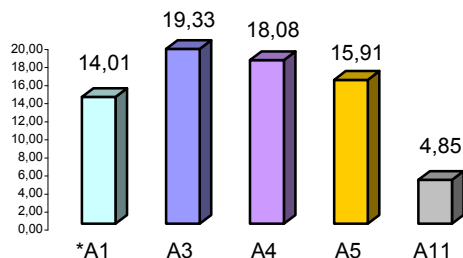
Udio vozila po kategorijama			
oznaka	laka vozila (%)	teška vozila (%)	motocikli (%)
*A1	85,94	14,01	0,05
A3	80,63	19,33	0,04
A4	81,89	18,08	0,03
A5	84,02	15,91	0,07
A11	95,08	4,85	0,07



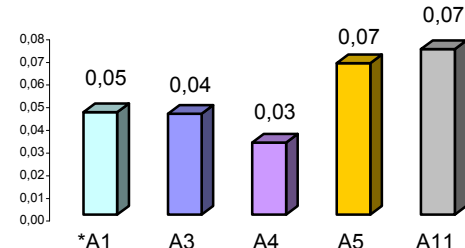
Udio lakih vozila na svim autocestama (%)



Udio teških vozila na svim autocestama (%)



Udio motocikala na svim autocestama (%)



* A1 od čvora Bosiljevo II do čvora Vrgorac (dionica Ravča - Vrgorac puštena je u promet 30.06.2011. godine)

° PMDP - prosječni mjesečni dnevni promet

laka vozila - osobna vozila, osobna vozila s prikolicom, kombiji; teška vozila - kamioni, kamioni s prikolicom, tegljači, autobusi

Napomena: točnost podataka sukladna je točnosti instaliranih klasifikatora