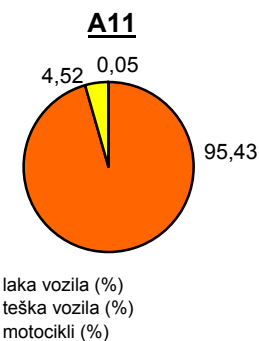
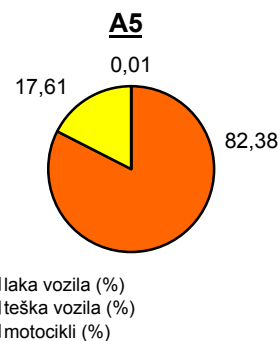
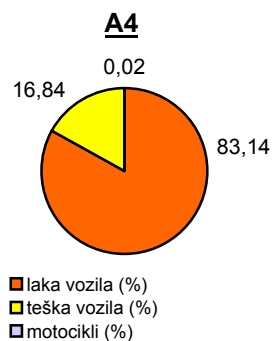
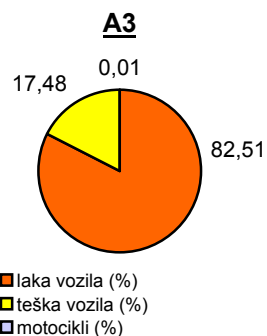
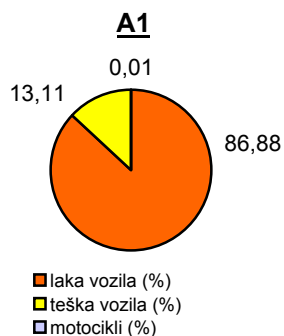


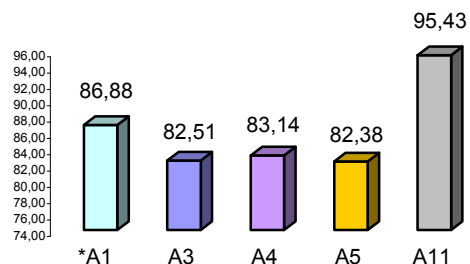
Promet na autocestama u nadležnosti HAC-a u mjesecu PROSINCU 2011. godine

Autocesta	duljina u km	OSTVARENI PROMET					Usporedba 2011./2010.		
		broj motocikala	broj lakih vozila	broj teških vozila	ukupno 2011.	ukupno 2010.	°PMDP 2010.	°PMDP 2011.	odnos prometa 2011./2010.
*A1	399,8	23	133.670	20.169	153.862	147.952	4.773	4.963	3,99%
A3	306,4	50	397.923	84.277	482.250	468.443	15.111	15.556	2,95%
A4	96,4	48	221.260	44.829	266.137	253.532	8.178	8.585	4,97%
A5	53,6	6	61.506	13.147	74.659	70.958	2.289	2.408	5,22%
A11	9,0	25	49.912	2.362	52.299	53.020	1.710	1.687	-1,36%

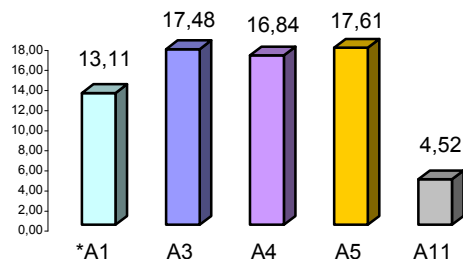
Udio vozila po kategorijama			
oznaka	laka vozila (%)	teška vozila (%)	motocikli (%)
*A1	86,88	13,11	0,01
A3	82,51	17,48	0,01
A4	83,14	16,84	0,02
A5	82,38	17,61	0,01
A11	95,43	4,52	0,05



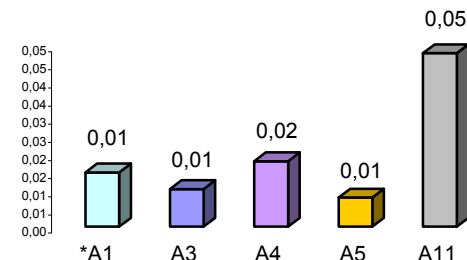
Udio lakih vozila na svim autocestama (%)



Udio teških vozila na svim autocestama (%)



Udio motocikala na svim autocestama (%)



* A1 od čvora Bosiljevo II do čvora Vrgorac (dionica Ravča - Vrgorac puštena je u promet 30.06.2011. godine)

° PMDP - prosječni mjesečni dnevni promet

laka vozila - osobna vozila, osobna vozila s prikolicom, kombiji; teška vozila - kamioni, kamioni s prikolicom, tegljači, autobusi

Napomena: točnost podataka sukladna je točnosti instaliranih klasifikatora