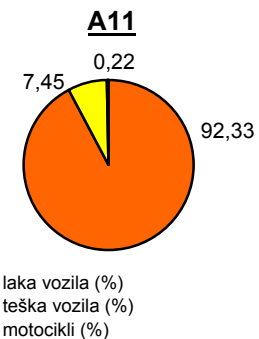
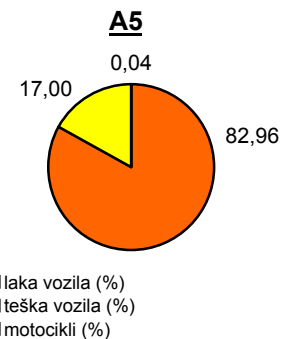
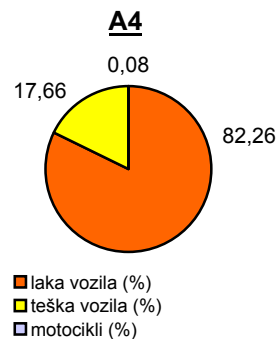
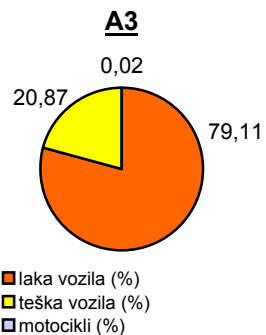
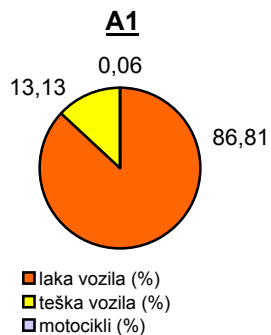


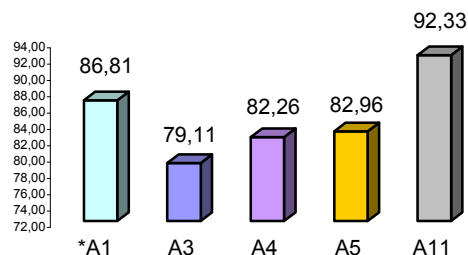
## Promet na autocestama u nadležnosti HAC-a u mjesecu OŽUJKU 2011. godine

Autocesta		OSTVARENI PROMET					Usporedba 2011./2010.		
oznaka	duljina u km	broj motocikala	broj lakih vozila	broj teških vozila	ukupno 2011.	ukupno 2010.	°PMDP 2010.	°PMDP 2011.	odnos prometa 2011./2010.
*A1	390,1	89	134.009	20.261	154.359	157.422	5.078	4.979	-1,95%
A3	306,4	71	345.056	91.043	436.170	445.102	14.358	14.070	-2,01%
A4	96,4	223	223.981	48.085	272.289	281.119	9.068	8.784	-3,14%
A5	53,6	29	62.077	12.720	74.826	74.029	2.388	2.414	1,08%
A11	9,0	119	51.037	4.119	55.275	34.681	1.119	1.783	59,38%

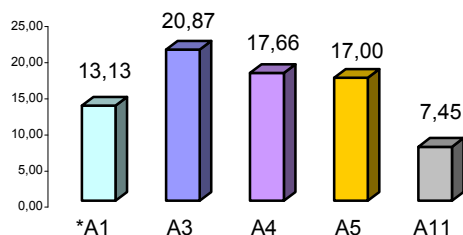
Udio vozila po kategorijama			
oznaka	laka vozila (%)	teška vozila (%)	motocikli (%)
*A1	86,81	13,13	0,06
A3	79,11	20,87	0,02
A4	82,26	17,66	0,08
A5	82,96	17,00	0,04
A11	92,33	7,45	0,22



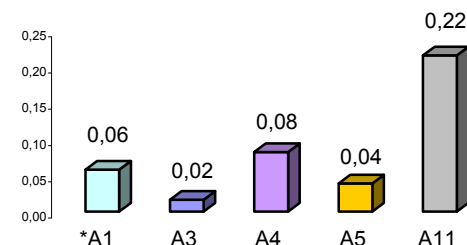
Udio lakih vozila na svim autocestama (%)



Udio teških vozila na svim autocestama (%)



Udio motocikala na svim autocestama (%)



\* A1 od čv. Bosiljevo II - čv. Ravča

° PMDP - prosječni mjesečni dnevni promet

laka vozila - osobna vozila, osobna vozila s prikolicom, kombiji; teška vozila - kamioni, kamioni s prikolicom, tegljači, autobusi

**Napomena:** točnost podataka sukladna je točnosti instaliranih klasifikatora