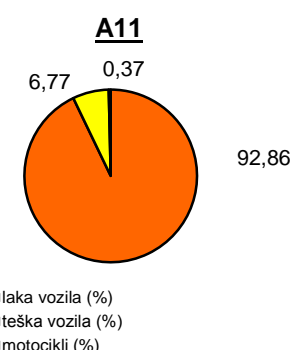
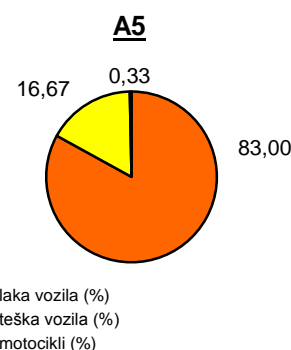
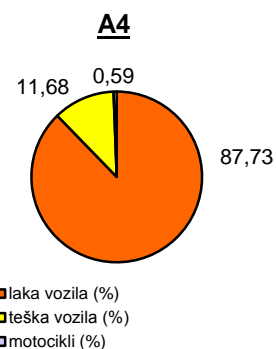
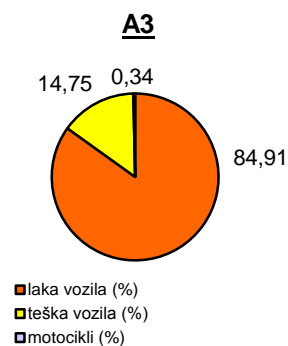
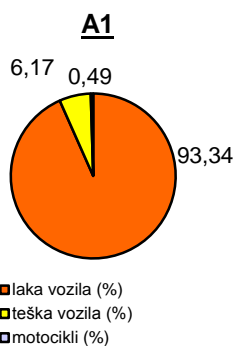


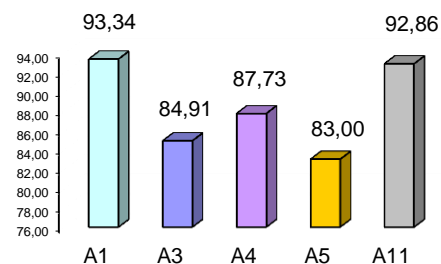
## Promet na autocestama u nadležnosti HAC-a u mjesecu SRPNJU 2013. godine

Autocesta		OSTVARENI PROMET					Usporedba 2013./2012.		
oznaka	duljina u km	broj motocikala	broj lakih vozila	broj teških vozila	ukupno 2013.	ukupno 2012.	°PMDP 2012.	°PMDP 2013.	odnos prometa 2013./2012.
A1	399,8	3.494	669.262	44.223	716.979	708.705	22.861	23.128	1,17%
A3	306,4	2.370	583.630	101.390	687.390	709.370	22.883	22.174	-3,10%
A4	96,4	2.845	420.514	55.994	479.353	473.822	15.285	15.463	1,16%
A5	53,6	295	74.275	14.919	89.489	87.247	2.814	2.887	2,59%
A11	9,0	200	50.340	3.668	54.208	77.542	2.501	1.749	-30,08%

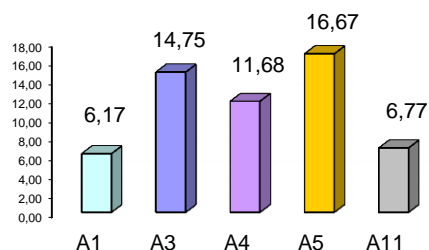
Udio vozila po kategorijama			
oznaka	laka vozila (%)	teška vozila (%)	motocikli (%)
A1	93,34	6,17	0,49
A3	84,91	14,75	0,34
A4	87,73	11,68	0,59
A5	83,00	16,67	0,33
A11	92,86	6,77	0,37



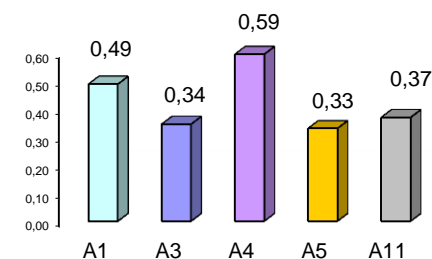
Udio lakih vozila na svim autocestama (%)



Udio teških vozila na svim autocestama (%)



Udio motocikala na svim autocestama (%)



° PMDP - prosječni mjesečni dnevni promet

laka vozila - osobna vozila, osobna vozila s prikolicom, kombiji; teška vozila - kamioni, kamioni s prikolicom, tegljači, autobusi

**Napomena:** točnost podataka sukladna je točnosti instaliranih klasifikatora